

# HIT – Hose Inspection Tool

## Camera system for internal hose inspection

The Scanmatic Hose Inspection Tool (HIT) enables detailed inspection inside a condensate offloading hose in real time.

On the Aasta Hansteen platform the gas condensate offloading hose will be inspected regularly. The 350 m hose is then water filled and hangs vertically from the platform. The HIT camera probe is lowered into the hose by winch and its position monitored by the use of an encoder within the winch slip ring. Over a fibre optical cable the HD video is transferred to the control room where an operator uses Scanmatic's HIT Control software to record the video, document any irregularities and compare the scene with previous inspection data. The user controls the winch by means of a joystick interfaced with a PLC.

A similar system has been delivered to the Goliat platform. This project in addition provided an automatic system for outside hose inspection and used RFID to register position.

All components delivered are ATEX-approved according to the specified requirements.



*This camera probe is designed to operate inside the 12" condensate offloading hose used on the Aasta Hansteen platform.*

- ATEX approved
- HD video
- User friendly software
- Very little maintenance
- More than 25 years expected life time

## Technical specifications:

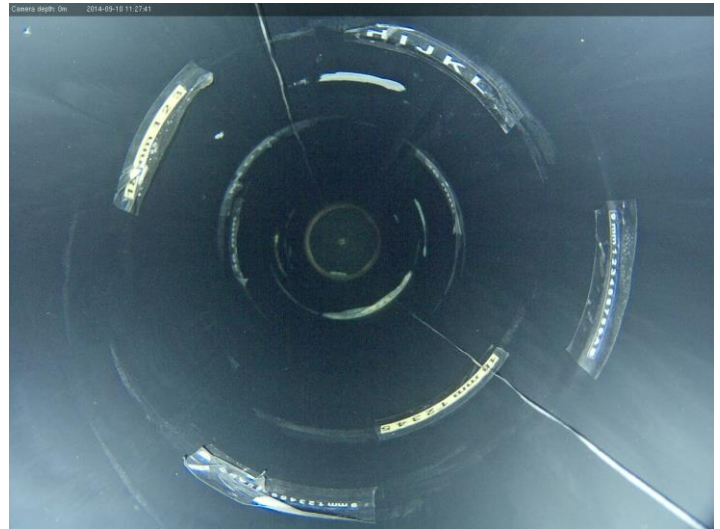
### Electrical interface:

|                    |       |
|--------------------|-------|
| Power supply:      | 48VDC |
| Power consumption: |       |
| ○ Typical          | 20 W  |
| ○ Max              | 30 W  |

### Physical properties:

|           |        |
|-----------|--------|
| Weight:   | 20 kg  |
| Length:   | 440 mm |
| Diameter: | 230 mm |

|                          |        |
|--------------------------|--------|
| Cable Length:            | 400 m  |
| Cable Safe Working Load: | 700 kg |



### Components:

|                |                     |
|----------------|---------------------|
| Camera:        | AXIS P1357          |
| Light control: | MMOXA ioLogik E1241 |

### Connectors:

|              |          |
|--------------|----------|
| Power:       | SubConn  |
| Fibre optic: | OptoLink |

### Environmental:

|                    |   |
|--------------------|---|
| Temperature range: | -10°C ... +30°C   |
| Encapsulation:     | IP68  |
| ATEX approval:     | CE  II 3G Ex nA nR IIB T6 Gc |

### HMI:

|           |                       |
|-----------|-----------------------|
| PC:       | Stahl-Syberg MT477    |
| Software: | Scanmatic HIT Control |

**For more information, please contact:**

Scanmatic AS

Email: [company@scanmatic.no](mailto:company@scanmatic.no) Tel: +47 37 05 95 00